



# Measuring Transformation & Elevating Youth Voice in Child Welfare

---

April is National Child Abuse Prevention Month  
#ChildAbusePreventionMonth

To Report Child Abuse and Neglect in Ohio  
Call **855 O-H-CHILD**  
**855-642-4453**

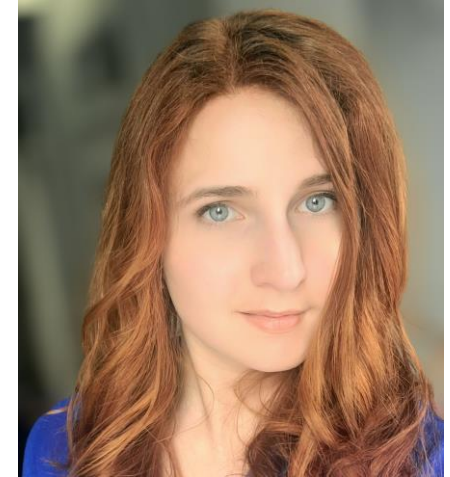
# Welcome and Introductions



Kim Eckhart, MS  
Project Manager  
CDF-Ohio



Deanna Jones, MPA, BSSW, LSW  
Consultant  
CDF-Ohio



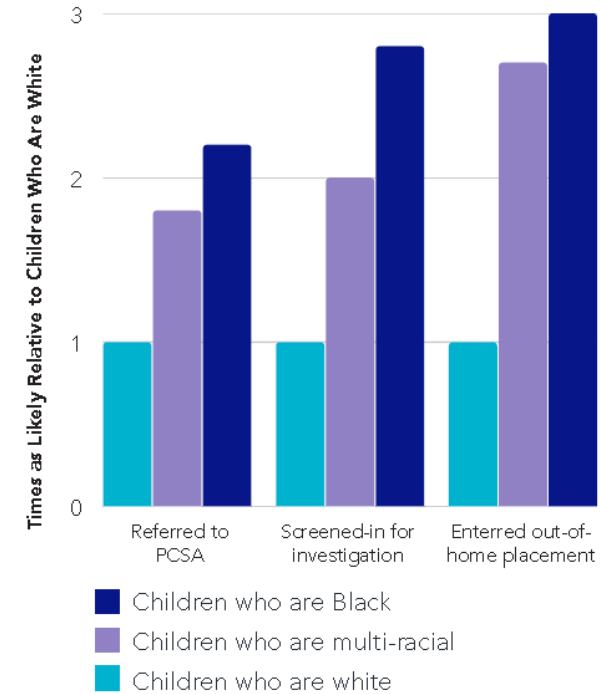
Laila-Rose Hudson, JD  
pending May 2022,  
Child Welfare  
Advocate

# The Challenge

Ohio ranks in the bottom 10% nationally on child welfare outcomes (2018 data)

Bottom 10%	OH	US
Those who attained a High School Diploma/GED	60%	70%
Those who were employed	46%	57%
Those who were enrolled in school	12%	28%
Those who experienced incarceration	37%	19%
Bottom 20%		
Those who experienced homelessness	37%	29%
Those who have a connection to an adult	81%	87%

Racial disproportionality in Ohio's child welfare system (2020 data)



“

My hope for youth in care is that their voices can be heard in a meaningful way.

”

# How is Ohio doing?

## Key Statistics

- The percentage of children placed in congregate care among counties ranges from as high as 63% to as low as 5%.
- Over 1,000 youth aged out of care in 2019 and 2020, but in 2021, the number decreased to 952.
- Participation in Bridges, which offers independent living services to youth who age out of care, increased by more than 20% in each of the last two years.
- Roughly one in four children have more than one report of maltreatment in one year.
- Children in Ohio who are Black are three times more likely to be placed in out-of-home care as children who are white.

## Does Ohio meet the National Standard?

### Safety



More Ohio children experience multiple instances of abuse and neglect than nationally.



More Ohio children experience maltreatment while in care than nationally.

### Permanency



Ohio performs better than average on measures of permanency.



Of children who are reunified, more return to foster care within 12 months than the national average.

### Stability



Placement stability is an area of strength for Ohio, with children moving less frequently than in other states.

# How are counties doing?

Dashboard Link: <https://cdfohio.org/policy/resources/kids-count/>

## Measuring Transformation & Elevating Youth Voice

### IN CHILD WELFARE

#### Benchmark County Profile

This is a sample profile that displays data for a hypothetical county that performs better than average on specific measures. Population and other rates listed in the header show the state averages. To view a specific county, visit <https://cdfohio.org/policy/resources/kids-count/>.

Child Population: 2,558,641	Children in Care (2021): 25,104
Black: 15%	Rate of Maltreatment: 6.8
Hispanic: 7%	Placement Rate: 9.7
Multi-racial: 5%	Maltreatment Recurrence Rate: 10.1%
Other: 4%	Re-entry Rate: 10.4%
White: 70%	Report Recurrence Rate: 23.1%

#### First and Foremost, Keep Children Safe.

This profile includes key indicators that measure how well our community is doing in ensuring the safety, permanency, stability and equity of children and youth who experience maltreatment. The measures are important but they don't tell the whole story. Youth with lived experience have spoken: Ohio must systematically capture youth experiences from their own perspective to measure performance.

#### Percentage of Children Who Have a Repeated Instance of Maltreatment

Recurrence of Maltreatment National Standard

Year	Percentage
2019	5.5%
2020	3.2%
2021	1.5%

#### Percentage of Children With Multiple Reports of Maltreatment

Report Recurrence State Average

Year	Percentage
2019	13.1%
2020	12.9%
2021	11.8%

## Every Child Deserves to be Listened to.

Youth who have been in foster care said the most effective performance measures should be captured from youth themselves. Ask them: Do you feel safe and comfortable in your placement? How would you rate your relationship with your caseworker? Are you aware of the Foster Youth Bill of Rights? Responses to these questions should be measured at the county level and included alongside other measures when evaluating the impact of reforms.

#### Total Number of Youth Who Aged Out of Foster Care

Year	Number
2019	35
2020	23
2021	21

#### Percent of Children Who Re-enter Care Within the Year

Re-entry State Average

Year	Percentage
2019	10%
2020	2%
2021	0%

#### Percent of Children Placed in Congregate Care, Kinship Care and Family Foster Care

Year	Congregate Care	Family Foster Care	Kinship Care
2019	24.0%	43.1%	27.0%
2020	20.8%	44.7%	23.7%
2021	21.0%	43.5%	29.5%

#### Percent of Children Who Experienced a Trial Home Visit, Independent Living Services, or Who Ran Away from a Placement

Year	Percentage
2019	5.88%
2020	5.72%
2021	5.98%

## Racial Equity Must Remain Central.

Youth who have been in foster care said the most effective performance measures should be captured from youth themselves. Ask them: Do you feel safe and comfortable in your placement? How would you rate your relationship with your caseworker? Are you aware of the Foster Youth Bill of Rights? Responses to these questions should be measured at the county level and included alongside other measures when evaluating the impact of reforms.

#### Maltreatment Rate by Race and Age per 1,000 Children

#### Placement Rates by Race and Age per 1,000 Children

# Reason to Hope

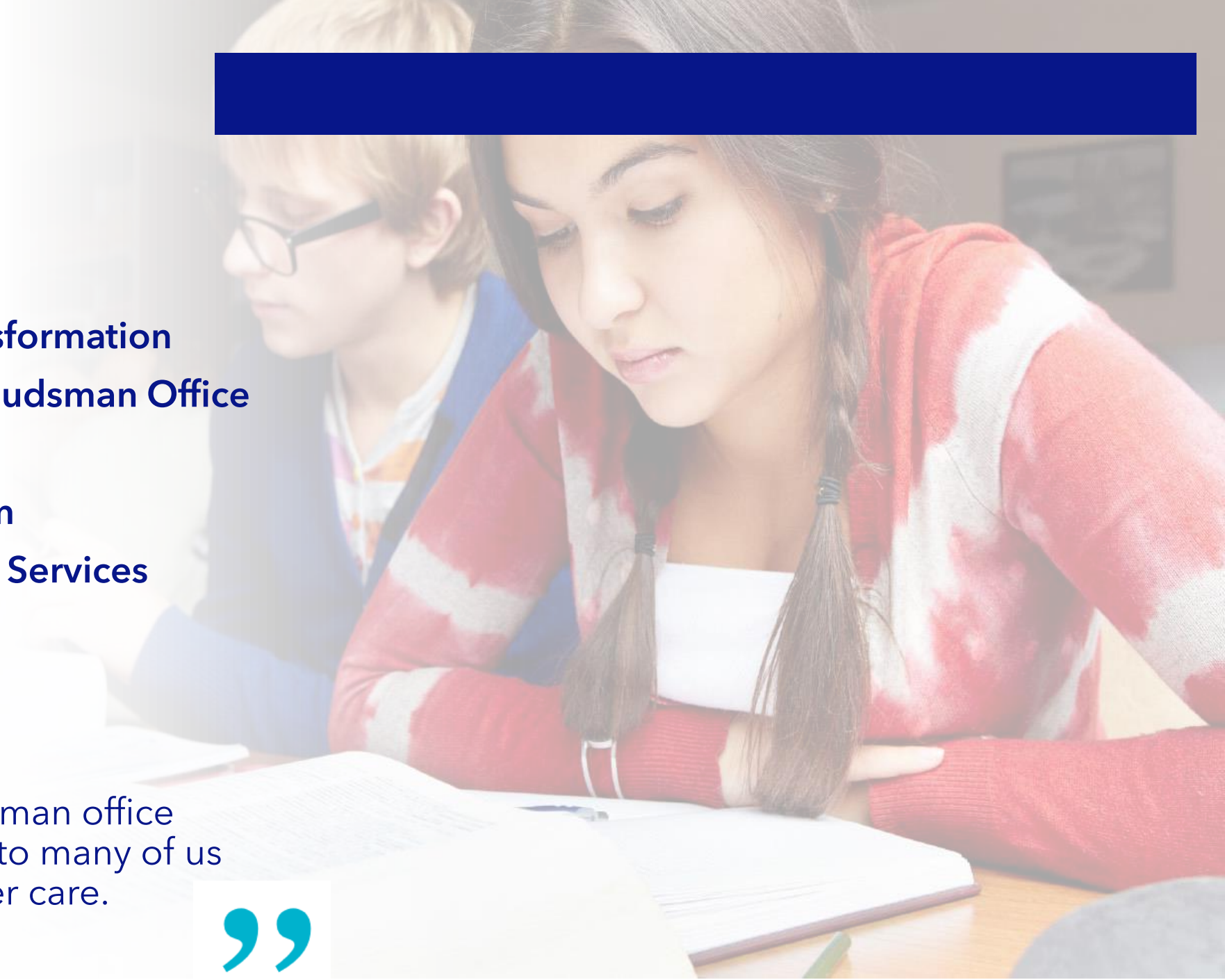
## Reform efforts in Ohio

- Children Services Transformation
- Youth and Family Ombudsman Office
- Addressing Racism
- Safe Babies Court Team
- Family First Prevention Services

“

A Youth Ombudsman office represents hope to many of us who were in foster care.

”



# Looking Ahead

## Designing a Youth Experience Survey

“We also need to be taking qualitative, anonymous, if need be, surveys of our kids in care, frequently, and asking them if they are being maltreated.”

### Questions that Can Serve as Baseline Measures

Have you experienced maltreatment in care?

Do you feel safe in your placement?

Are you aware of the Foster Youth Bill of Rights?

How would you rate the quality of your relationship with your caseworker?

How many caseworkers have you had during your time in care?

Are you aware of independent living resources and supports?

How prepared are you for adulthood?

# Key Takeaways

- Leaders in Ohio recognize the challenges faced by youth in the child welfare system and are working toward reform.
- Identifying measures is a key part of continuous quality improvement.
- Focus on performance measures that matter to youth
- Include youth interviews in performance measures
- Reimagine existing processes as performance measures
- Include measures of well-being from other systems



# Challenges and Intersections

- Bias in data and the importance of survey design
- Caseworker workload and workforce challenges in Ohio
- Proactive role of the Youth Ombudsman office in using the data
- Status updates about the Youth Ombudsman office
- Youth Ombudsman offices in other states
- Initiatives in other states

# Questions



Kim Eckhart, MS  
Project Manager  
CDF-Ohio



Deanna Jones, MPA, BSSW, LSW  
Consultant  
CDF-Ohio



Laila-Rose Hudson, JD  
pending May 2022,  
Child Welfare  
Advocate